

# **EHS**

***Electric Heating Systems, Inc.***

**Specializing In Industrial  
Heat Treating Sales,  
Service & Rental  
Equipment.**



**[www.HotfoilEHS.com](http://www.HotfoilEHS.com)**



**Electric Heating Systems, Inc.**  
**2960 East State Street Ext.**  
**Hamilton, NJ 08619**  
**Phone 609.588.0900**

**Electric Heating Systems, Inc. (EHS)** was established in 1994 in Robbinsville, NJ to design and supply turnkey permanent low temperature heating systems for the Power and Tank Industries. In 1996, the name for this division became **Hotfoil**, and **EHS** became a supplier of Ceramic Heaters and accessories for the Heat Treating Industry.

From a small start importing consoles for resale, **EHS** has grown to become a major, in-house, manufacturing Corporation, producing and stocking a broad line of standard and custom designed Industrial Heat Treating Equipment. Our inventory includes custom control panels, heat treating power consoles, cables and splitters, temperature recorders, thermocouple attachment units and pin guns. Our ceramic heaters range from standard voltages to multi-circuit, high and low voltage elements. We also supply combustion control equipment and burners from 1 to 10 MBTU.

We have a full inventory of materials to supply and produce insulation mats, twist-lock cable connectors, thermocouple wire and plugs, and banding and tools. This supplements the main product line to a broad US and Worldwide demand from the Heat Treating Service Industry.

In 2006, several large (55' x 12') rolling modular furnaces were manufactured, containerized and shipped overseas. They were assembled on different construction sites and were in operation within ten days. These furnaces were both propane and diesel burner, fired with automatic control.

With continued awareness to the needs of the ever fluctuating and growing Heat Treating Industry, **EHS** has risen to the challenge by maintaining an abundant inventory of parts and products. By tripling our manufacturing capability in the past three years, we have substantially improved control of cost and product design. By the addition of qualified personnel to the Management Team, **Electric Heating Systems** maintains a responsive and quality-oriented commitment to our customers.

Thank you for this opportunity to introduce you to the **EHS** line of Heat Treating Equipment.

Matthew Richards



Electric Heating Systems, Inc.  
2960 East State Street Ext.  
Hamilton, NJ 08619  
Phone 609.588.0900

## **LEGEND**

- Part # 21** POWER CONSOLE & TWIN HEAT MODULE  
INFORMATION (PAGES 5-8)
- Part # 22** RECORDERS, CASES, CHART PAPER AND PARTS  
(PAGES 9-10)
- Part # 23** THERMOCOUPLE ATTACHMENT UNITS, PIN GUNS,  
HARDNESS TESTING KITS & ACCESSORIES.  
(PAGES 11-13)
- Part # 24** TWISTLOCKS AND CABLE CONNECTOR ACCESSORIES  
(PAGE 14)
- Part # 25** TRIPLE CABLE SETS, THERMOCOUPLE WIRE,  
THERMOCOUPLE EXTENSION WIRE, STAINLESS  
STEEL T/C'S AND ACCESSORIES (PAGES 15-16)
- Part # 26** INSULATION, BANDING & T/C WIRE (PAGES 17-18)
- Part # 27** CERAMIC MAT HEATERS (CMH), CHANNEL BANKS,  
HEATER WIRE (80/20, NICKEL) HEATER BEADS  
(PAGES 19-22)
- Part # 28** COMBUSTION EQUIPMENT 6MIL, 8 MIL, 10 MIL,  
DUAL 1 MIL TRAINS, BURNERS, HOSES, PARTS,  
(PAGES 23-25)
- CUSTOM CONTROL PANELS AND CONTROLS (PAGE 26)
- CUSTOM FURNACES AND BURNER SYSTEMS (PAGE 27)
- CUSTOM MOBILE RIGS UP TO 36 ZONES (PAGE 28)
- GENERATORS 225 KVA IN STOCK (PAGE 29)
- OUR LOCATIONS (PAGE 30)
- OUR REPRESENTATION (PAGE 32)

# EHS

Electric Heating Systems, Inc.  
2960 East State Street Ext.  
Hamilton, NJ 08619  
Phone 609.588.0900

**Standard 6-Way Model pictured below**



**Power Consoles "Ramp"**

**6WPCR/A-73KVA** Six-Way Power Console with (6) **EHS 3216 Ramp Controllers** with (1) Circuit Breaker, (6) Albright Contactors, (6) Heater-on Lights, (3) T/C Locations / Circuit, (1) 6 inch Instrument Cooling Fan, (2) 120 volt Power Outlets, (1) Ammeter & 6-position Switch. Console is Pre-wired & Tested.  
**PART # 21115R**

**Power Consoles "Fully Automatic"**

**6WPCFA/A-73KVA** 6-Way Power Console with (1) **EHS 3216 Master** and (5) **EHS 3216 Slave Controllers**.  
**PART # 21115FA**

**Standard 12-Way Model pictured below**



**Power Consoles "Ramp"**

**12WPCR /A-91KVA** 12-Way Power Console with (12) **EHS 3216 Ramp Controllers** (1) Circuit Breaker, (12) Albright Contactors, (12) Heater-on Lights, (3) T/C Locations / Circuit, (2) 6 inch Instrument Cooling Fan, (2) 120 volt Power Outlets, (1) Ammeter & (2) 6-position Switches. Console is Pre-wired & Tested.  
**PART # 21150R**

**Power Consoles "Fully Automatic"**

**S12WPCFA/A-91KVA** 12-Way Power Console with (1) **EHS 3216 Master** and (11) **EHS 3216 Slave Controllers**.  
**PART # 21150FA**

# EHS

Electric Heating Systems, Inc.  
2960 East State Street Ext.  
Hamilton, NJ 08619  
Phone 609.588.0900

**Stand-up 6-Way Model with Recorder pictured below**



**Power Consoles "Ramp"**

**S6WPCR/A-73KVA** 6-Way Power Console with (6) **EHS 3216 Ramp Controllers** with (1) **12-point Chino Digital Recorder** (1) Circuit Breaker, (6) Albright Contactors, (6) Heater-on Lights, (3) T/C Locations / Circuit, (1) 6 inch Instrument Cooling Fan, (2) 120 volt Power Outlets, (1) Ammeter & 6-position Switch. Console is Pre-wired & Tested.

**PART # 21515R**

**Power Consoles "Fully Automatic"**

**S6PCFA/R/A-73KVA** 6-Way Power Console with (1) **EHS 3216 Master** and (5) **EHS 3216 Slave Controllers**.  
**PART # 21515FA**

**Stand-up 12-Way Model with Recorder pictured below**



**Power Consoles "Ramp"**

**S12WPCR/R/A-91KVA** 6-Way Power Console with (6) **EHS 3216 Ramp Controllers** with (1) **12-point Chino Digital Recorder** (1) Circuit Breaker, (12) Albright Contactors, (12) Heater-on Lights, (3) T/C Locations / Circuit, (2) 6 inch Instrument Cooling Fan, (2) 120 volt Power Outlets, (1) Ammeter & (2) 6-position Switches. Console is Pre-wired & Tested.

**PART # 21520R**

**Power Consoles "Fully Automatic"**

**S12WPCFA/R/A-91KVA** 12-Way Power Console with (1) **EHS 3216 Master** and (11) **EHS 3216 Slave Controllers**.  
**PART # 21520R**



**Electric Heating Systems, Inc.**  
**2960 East State Street Ext.**  
**Hamilton, NJ 08619**  
**Phone 609.588.0900**

**Stand-up Stainless Steel 6-Way Model with Recorder pictured below**



**Power Consoles "Ramp"**  
**S6WPCR/SS/A-73KVA** 6-Way Power Console with (6) **EHS 3216 Ramp Controllers** with (1) **12-point Chino Digital Recorder** (1) Circuit Breaker, (6) Albright Contactors, (6) Heater-on Lights, (3) T/C Locations / Circuit, (1) 6 inch Instrument Cooling Fan, (2) 120 volt Power Outlets, (1) Ammeter & 6-position Switch. Console is Fully Tested. **PART # 21515RSS**

**Power Consoles "Fully Automatic"**  
**S6PCFA/SS/A-73KVA** 6-Way Power Console with (1) **EHS 3216 Master** and (5) **EHS 3216 Slave Controllers**.  
**PART # 21515FASS**

**18 & 24-Way Power Consoles (24-Way Pictured Below)**



**Power Consoles "Fully Automatic"**  
(2) **EHS 3216 Master** and (22) **EHS 3216 Slave Controllers**. (1) **24-point Chino Digital Recorder** (1) Circuit Breaker, (24) Albright Contactors, (24) Heater-on Lights, (2) T/C Locations / Circuit, (4) 6 inch Instrument Cooling Fan, (2) 120 volt Power Outlets, (2) Ammeter & Four 6-position Switches. Console is Pre-wired & Tested.  
**24-Way "Ramp"PART # 21550R**  
**24-Way "Fully Auto"PART # 21550FA**  
**18-Way "Ramp"PART # 21540R**  
**18-Way "Fully Auto"PART # 21540FA**

**Twin Heat Modules with and without Recorders pictured below**



**Twin Heat Modules**  
**THM 2-Way Twin Heat (2) EHS 3216 Ramp Controllers** (2) Contactors, easy hook-up to a welding machine.  
**PART # 21302**

**THM/R 2-Way Twin Heat (2) EHS 3216 Ramp Controllers** (2) Contactors, with (1) **6-point Chino Digital Recorder**  
**PART # 21303**

# EHS

**Electric Heating Systems, Inc.**  
**2960 East State Street Ext.**  
**Hamilton, NJ 08619**  
**Phone 609.588.0900**



### Standard Transformers

380/440/480/575 Primary Taps  
 65/80 Secondary Taps  
 Separate 1 KVA 120 Volt control Tap  
 Three High-Temp Thermal Cut-outs One/Ph.

50KVA	Part # 221408
65KVA	Part # 221404
73KVA "stock"	Part # 221405
91KVA "stock"	Part # 221406

### Power Console Replacement Parts

EHS "Ramp" Controller	Part # 21427
EHS "Master" Controller	Part # 21429
EHS "Slave" Controller	Part # 21430
Watlow "Ramp" Controller	Part#21225/96
Watlow "Ramp" Controller	Part#21225/SD
Watlow "Master" Controller	Part # 21226
Watlow "Slave" Controller	Part # 21227
Electrosolve Push-button	Part # 21220
Electrosolve Thumb Wheel	Part # 21222
Electrosolve Digital 16 Din	Part # 21223
Electrosolve Digital 8 Din	Part # 21224
Energy Regulator	Part # 21221
FGH P250A Controller	Part # 21210
FGH-SP502 Controller	Part # 21215
FGH-DRMC Controller	Part # 21211
Albright Contactors SW200	Part # 21250
Albright Repair Kits	Part # 21251
Albright Coil	Part # 21252

### Power Console Replacement Parts

EHS Ammeter 0-150	Part # 21338
EHS Ammeter 0-200	Part # 21336
EHS CT Coil 5:150	Part # 21339
EHS CT Coil 5:200	Part # 21337
Single Panel Mount T/C	Part # 21337
Dual Panel Mount T/C	Part # 25259
6" Greasable Wheel	Part # 21238
6" Complete Wheel Fixed	Part # 21238F
6" Complete Wheel Swivel	Part # 21238S
Red LED Light	Part # 21332
Console Switch ON/OFF	Part # 21330
Console Switch DPDT	Part # 21230
Console Fuse Holder	Part # 21251
Console 6" Fan	Part # 21235
Console 6" Fan Cover	Part # 21234
Main Breaker 125Amp	Part # 21235
Main Breaker 160Amp	Part # 21234
Breaker Shunt Trip	Part # 21236

# EHS

Electric Heating Systems, Inc.  
2960 East State Street Ext.  
Hamilton, NJ 08619  
Phone 609.588.0900

## Chino Digital Recorders Model AL & Model AH



**Chino Recorder:** Model AH & AL 3000, Digital Reading, Compact, Deg. F&C, able to accept multiple Thermocouple Types, Standard Chart, 0-2000 Deg.F. **With Pre-mounted Type "K", Thermocouple Jacks & a 6Ft. power cord plus carrying case.**

EHSAL3725 PART # 22007  
EHSAH3725 PART # 22004  
EHSAH3745 PART # 22005  
CARRYING CASE ADD A "C" AFTER #

Carrying Case Only Part # 22012

## Eurotherm Chessel Graphic, Paperless Recorder Model 6100



**Eurotherm Recorder:** Model 6100, Graphic Reading, Compact, Deg. F&C, able to accept multiple Thermocouple Types, **With Pre-mounted Type "K", Thermocouple Jacks & a 6Ft. power cord plus carrying case.**

6100A comes with a 5.5" viewing touch screen  
6180A comes with a 12.1" viewing touch screen

Copies Data to a 3.5" disk, CD, or memory stick.

EHS6100A-6PT. PART # 22206  
EHS6100A-12PT. PART # 22207  
EHS6180A-12PT. PART # 22204  
EHS6180A-24PT. PART # 22205  
CARRYING CASE ADD A "C" AFTER #

Carrying Case Only Part # 22012

# EHS

**Electric Heating Systems, Inc.**  
**2960 East State Street Ext.**  
**Hamilton, NJ 08619**  
**Phone 609.588.0900**



## Recorder Chart Paper & Accessories

EM-202F 0-2000, 100mm	Part # 22016
EH51089 0-2000, 180mm	Part # 22017
EH05398 0-2200, 180mm	Part # 22018
EH05035 0-1200, 180mm	Part # 22014
EX51036 0-2000, 250mm	Part # 22058
EX51039 1-20, 250mm	Part # 22019
EX01076 0-2400, 250mm	Part # 22015
AH Replacement Ribbons	Part # 22020H
AL Replacement Ribbons	Part # 22020L
AH 3000 Range Cards	Part # 22021
AL 3000 Range Cards	Part # 22022
AH Display Joint Board	Part # 22023
AH Replacement Key Pad	Part # 22050
AH Replacement Display	Part # 22051
AH Metal Door	Part # 22052
AH Plastic Door	Part # 22053
AL Plastic Door	Part # 22058
AH Paper Holder	Part # 22054
EH Range Card 0-2000	Part # 22025
EH Ink Wheel	Part # 22024
EH Pointer	Part # 22031
EA Range Card 0-2000	Part # 22026
EA Ink Wheel	Part # 22029
EA Pointer	Part # 22030
Pre-wired 6-PT. Jack Panel	Part # 22015L
Pre-wired 6-PT. Jack Panel	Part # 22015H
Pre-wired 12-PT. Jack Panel	Part # 22013
Pre-wired 24-PT. Jack Panel	Part # 22014

# EHS

Electric Heating Systems, Inc.  
2960 East State Street Ext.  
Hamilton, NJ 08619  
Phone 609.588.0900

## EHS - Thermocouple Attachment Units & Pin Guns



**EHS Hot-Spot I** Thermocouple Attachment Unit. The unit has a battery light, ready light, charge button & a discharge button. It comes equipped with pliers, magnet, charging cord & SS case

EHS-Hot Spot WITH CASE  
PART # 23100C



### **OTHER MODELS ARE AVAILABLE**

Hot-Spot I PART # 23100 Top Left  
Hot-Spot II PART # 23200 Bottom Left  
EHS-TAU PART # 23001 Top Right  
EHS-TAU-V PART # 23050 Bottom Right  
EHS-MINI PART # 23250 Middle Front



**PIN WELDING** 12ga.-10ga. & 14 ga. Insulation Pins, Bantam Weld Gun and Cable Set 16ft. Long, 120 Volt Supply Input, 10 Amp Circuit Breaker Protected, Simple 1-6 Power Settings, Only 28 Pounds, Powder Coated Finish. We carry all Replacement Parts, Accessories, Collets, Collet Protectors, Stops, Inserts, Etc...

PART # 23300

# EHS

**Electric Heating Systems, Inc.**  
**2960 East State Street Ext.**  
**Hamilton, NJ 08619**  
**Phone 609.588.0900**



### *Pinto Stud Gun Parts & Accessories*

Carrying Case	Part # 23310
Button Stop Collets	Part # 23311
12GA Collet Protector	Part # 23312
12GA Protector Body	Part # 23313
Spindle Screws	Part # 23314
B-Collets	Part # 23315
Weld Gun Only	Part # 23316
Controller Only	Part # 23317
Nail Guide	Part # 23318
Heavy Silver Spring	Part # 23319

### *TAU Parts & Accessories*

Hot Spot I-TAU Pliers	Part # 23150
Hot Spot I-TAU Magnet	Part # 23152

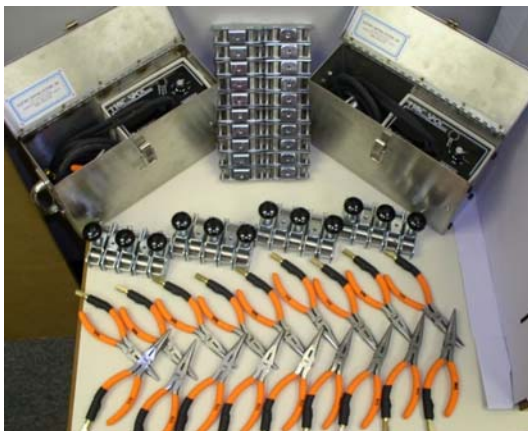
Hot Spot I-TAU Stock Case	Part # 23155
Hot Spot I-TAU Battery	Part # 23151

Hot Spot I Stainless Case	Part # 23154
---------------------------	--------------

EHS-TAU Pliers	Part # 23003
EHS-TAU Magnet	Part # 23004
EHS-TAU Capacitor	Part # 23002

EHS-TAU Thyristers	Part # 23005
EHS-TAU Buttons	Part # 23006
EHS-TAU Case	Part # 23007
EHS-TAU Battery	Part # 23008
EHS-TAU Transformer	Part # 23009

EHS-TAU Upper Board	Part # 23010
EHS-TAU Lower Board	Part # 23011
EHS-TAU LED	Part # 23012



# EHS

Electric Heating Systems, Inc.  
2960 East State Street Ext.  
Hamilton, NJ 08619  
Phone 609.588.0900



### Hardness Tester Kit

Telebrineller Standard	Part # 23400
Telebrineller w/Fillitester	Part # 23401
Fillitester only	Part # 23410
Microscope only	Part # 23411
Calibration Disk only	Part # 23412
Bar Holder only	Part # 23413
Fillitester Test Bars	Part # 23402

When ordering bars, use the part# then a dash and the Bar Hardness # you need.  
Example: Part # 23402-190 (190 Bar)



### Poldi Test Kit

Poldi Kit	Part # 23500
Poldi Bars	Part # 23510

# EHS

**Electric Heating Systems, Inc.**  
**2960 East State Street Ext.**  
**Hamilton, NJ 08619**  
**Phone 609.588.0900**



### *EHS 60/150 & 300 Amp Twistlocks*

60 Amp Male Complete	Part # 24002
60 Amp Male H/T	Part # 24001
60 Amp Male Brass	Part # 24003
60 Amp Male Sleeve	Part # 24005
60 Amp Male H/T Sleeve	Part # 24004
60 Amp Female Complete	Part # 24102
60 Amp Female H/T	Part # 24101
60 Amp Female Brass	Part # 24103
60 Amp Female Sleeve	Part # 24105
60 Amp Female H/T Sleeve	Part # 24104
60 Amp Pins	Part # 24007
60 Amp Copper 1/2"x2"	Part # 24150
60 Amp Male Panel	Part # 24201
60 Amp Female Panel	Part # 24202
300 Amp Male Complete	Part # 24302
300 Amp Male H/T	Part # 24301
300 Amp Male Brass	Part # 24303
300 Amp Male Sleeve	Part # 24305
300 Amp Male H/T Sleeve	Part # 24304
300 Amp Female Complete	Part # 24402
300 Amp Female H/T	Part # 24401
300 Amp Female Brass	Part # 24403
300 Amp Female Sleeve	Part # 24405
300 Amp Female H/T Sleeve	Part # 24404
300 Amp Pins	Part # 24307
300 Amp Copper 3/4"x2"	Part # 24450
300 Amp Male Panel	Part # 24501
300 Amp Female Panel	Part # 24502



**Electric Heating Systems, Inc.**  
**2960 East State Street Ext.**  
**Hamilton, NJ 08619**  
**Phone 609.588.0900**



**EHS Triple Cable Sets made with Heavy Duty #2 Welding Cable and Shielded Type "K" Compensation lead**

PART # 25510	25 FT.
PART # 25511	50 FT.
PART # 25512	75 FT.
PART # 25513	100 FT.
PART # 25514	150 FT.

Also available in #4 & #3 Welding cable.  
 Other custom lengths available.



**EHS Splitters made with #6 Heavy Duty Welding Cable**

PART # 25501	2-Way
PART # 25502	3-Way
PART # 25503	4-Way



**EHS Heavy Duty Welding Cable**

PART # 25601B	#2 Black
PART # 25601R	#2 Red
PART # 25603B	#3 Black
PART # 25603R	#3 Red
PART # 25605B	#4 Black
PART # 25605R	#4 Red
PART # 25611B	#6 Black
PART # 25611R	#6 Red

Other Colors Available

# EHS

**Electric Heating Systems, Inc.**  
**2960 East State Street Ext.**  
**Hamilton, NJ 08619**  
**Phone 609.588.0900**



### Thermocouple Accessories

**Male T/C Plugs**      **Part # 25250**  
**Female T/C Jacks**   **Part # 25251**  
**Dual Panel Mounts**   **Part # 25249**

### **Type "K" T/C Extension**

Part # 25010   Non-Shielded  
 Part # 25011   Shielded  
 Part # 25012   Cotton Filled

### **Type "K" T/C Wire 1200 Deg.F.**

Part # 25001   Brown Jacket  
 Part # 25002   White Jacket  
 Part # 25013   Red/Yellow Twisted

### **Type "K" T/C Cefir Wire 2200 Deg.F.**

Part # 25004   Brown Jacket

### **Type "K" Stainless T/C Probes**

Part # 25201   2 ft.  
 Part # 25208   3 ft.  
 Part # 25202   4 ft.  
 Part # 25203   6 ft.  
 Part # 25204   8 ft.  
 Part # 25205   12 ft.  
 Part # 25206   15 ft.  
 Part # 25207   20 ft.  
 Part # 25209   18 ft.  
 Part # 25210   24 ft.

### **Thermocouple Putty**

Part # 25256   2# Tubes  
 Part # 25257   1# Jars

# EHS

**Electric Heating Systems, Inc.**  
**2960 East State Street Ext.**  
**Hamilton, NJ 08619**  
**Phone 609.588.0900**



### *EHS Heat Treating Accessories*

Stainless Banding	Part # 26505
Mild Steel Banding	Part # 26500
Stainless Wing Clips	Part # 26515

Banding Tool	Part # 26550
--------------	--------------

Iron Tie Wire	Part # 26575
Stainless Tie Wire	Part # 26575
Filament Tape	Part # 26525

7" Mild Steel Pins	Part # 26101
4" Mild Steel Pins	Part # 26102
2" Mild Steel Pins	Part # 26100

Mild Steel Washers - round	Part # 26151
Mild Steel Washers - square	Part # 26150

7" Stainless Steel Pins	Part # 26105
4" Stainless Steel Pins	Part # 26106
2" Stainless Steel Pins	Part # 26107

2" Mild Steel Pins, cupped	Part # 26110
2" Stainless Pins, cupped	Part # 26111



# EHS

Electric Heating Systems, Inc.  
2960 East State Street Ext.  
Hamilton, NJ 08619  
Phone 609.588.0900



## EHS Insulation

Ceramic Fiber 24"x300"x1" 6#	Part # 26001/6
Ceramic Fiber 24"x300"x1" 8#	Part # 26001/8
EHS Knitted Blanket 24"x300"x1/2"	Part # 26002
Maxil Non-Respiratory 36"x600"x1/2"	Part # 26003
Temp-Mat 1000 Deg.F. 60"x 900"x1/2"	Part # 26004
Stainless Steel Sock Mesh 12" x 325' 50#	Part # 26160
Stainless Steel Sock Mesh 18" x 244' 50#	Part # 26161
Stainless Steel Sock Mesh 24" x 162' 50#	Part # 26162

When ordering Stainless Steel Mats, please  
Reference the Ceramic Fiber Part # and the size.

Example:

Ceramic Fiber Insulation Mat 6# 1' x 3'

Part # 26001/6-1x3

Or call for further information.

# EHS

Electric Heating Systems, Inc.  
2960 East State Street Ext.  
Hamilton, NJ 08619  
Phone 609.588.0900

## EHS Ceramic Mat Heaters - CMH



We manufacture 25, 30, 40, 60, 70, 80, 120, 240, 277, 300, 330, 380, 400, 440, 480, 550, 575 & 600 Volt Ceramic Mat Heaters, all made in Robbinsville, NJ. USA

We also design and manufacture special shapes and sizes to fit any application.

### **New 80 Volt Heaters (3.6KW)**

CMH01-80.....	27113
CMH02-80.....	27115
CMH03-80.....	27101
CMH04-80.....	27102
CMH06-80.....	27103
CMH08-80.....	27104
CMH10-80.....	27105
CMH12-80.....	27106

CMH15-80.....	27107
CMH18-80.....	27106
CMH21-80.....	27109
CMH24-80.....	27110

CMH29-80.....	27114
CMH36-80.....	27111

CMH72-80.....	27112
---------------	-------

### **Rebuilding your 80 Volt Heaters (3.6KW)**

CMH01-80R.....	27213
CMH02-80R.....	27215
CMH03-80R.....	27201
CMH04-80R.....	27202
CMH06-80R.....	27203
CMH08-80R.....	27204
CMH10-80R.....	27205
CMH12-80R.....	27206

CMH15-80R.....	27207
CMH18-80R.....	27206
CMH21-80R.....	27209
CMH24-80R.....	27210

CMH29-80R.....	27214
CMH36-80R.....	27211

CMH72-80R.....	N/A
----------------	-----



Electric Heating Systems, Inc.  
2960 East State Street Ext.  
Hamilton, NJ 08619  
Phone 609.588.0900

**New 80 Volt High Temperature Heaters (3.4 KW)**

CMH01-80HT..... 27113HT  
CMH02-80HT..... 27101HT  
CMH04-80HT..... 27102HT  
CMH06-80HT..... 27103HT  
CMH08-80HT..... 27104HT  
CMH10-80HT..... 27105HT  
CMH12-80HT..... 27106HT  
CMH15-80HT..... 27107HT  
CMH18-80HT..... 27106HT  
CMH21-80HT..... 27109HT  
CMH24-80HT..... 27110HT  
CMH29-80HT..... 27114HT  
CMH36-80HT..... 27111HT  
CMH72-80HT.....27112HT

**New 80 Volt High Power Heaters (4.0 KW)**

CMH01-80HP..... 27113HP  
CMH02-80HP..... 27101HP  
CMH04-80HP..... 27102HP  
CMH06-80HP..... 27103HP  
CMH08-80HP..... 27104HP  
CMH10-80HP..... 27105HP  
CMH12-80HP..... 27106HP  
CMH15-80HP..... 27107HP  
CMH18-80HP..... 27106HP  
CMH21-80HP..... 27109HP  
CMH24-80HP..... 27110HP  
CMH29-80HP..... 27114HP  
CMH36-80HP..... 27111HP  
CMH72-80HP.....27112HP

**Rebuilding 80 Volt High Temperature Heaters (3.4 KW)**

CMH01-80RHT..... 27213HT  
CMH03-80RHT..... 27201HT  
CMH04-80RHT..... 27202HT  
CMH06-80RHT..... 27203HT  
CMH08-80RHT..... 27204HT  
CMH10-80RHT..... 27205HT  
CMH12-80RHT..... 27206HT  
CMH15-80RHT..... 27207HT  
CMH18-80RHT..... 27206HT  
CMH21-80RHT..... 27209HT  
CMH24-80RHT..... 27210HT  
CMH29-80RHT..... 27214HT  
CMH36-80RHT..... 27211HT  
CMH72-80RHT..... N/A

**Rebuilding High Power Heaters (4.0 KW)**

CMH01-80RHP..... 27213HP  
CMH03-80RHP..... 27201HP  
CMH04-80RHP..... 27202HP  
CMH06-80RHP..... 27203HP  
CMH08-80RHP..... 27204HP  
CMH10-80RHP..... 27205HP  
CMH12-80RHP..... 27206HP  
CMH15-80RHP..... 27207HP  
CMH18-80RHP..... 27206HP  
CMH21-80RHP..... 27209HP  
CMH24-80RHP..... 27210HP  
CMH29-80RHP..... 27214HP  
CMH36-80RHP..... 27211HP  
CMH72-80RHP..... N/A

**EHS 4-Bank Heater 13KW on 277 Volts**

Part # 27911

**EHS Mini Bank Heater 13KW on 277 Volts**

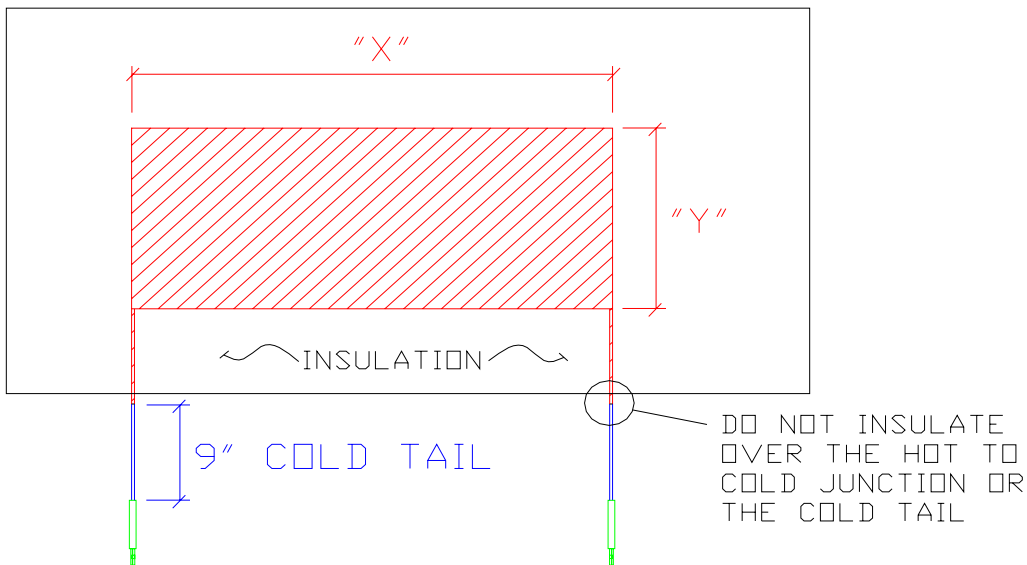
Part # 27910

**EHS ROPE HEATERS ARE MADE TO ORDER**



**Electric Heating Systems, Inc.**  
 2960 East State Street Ext.  
 Hamilton, NJ 08619  
 Phone 609.588.0900

**HEATER SIZES (STANDARD 60 & 80 VOLTS)**



**80 VOLT HEATER CHART**

**60 VOLT HEATER CHART**

PART #	REFERENCE	"X" DIM.	"Y" DIM.
27101	CMH03-80	3"	39"
27102	CMH04-80	4"	29"
27103	CMH06-80	6"	19.5"
27104	CMH08-80	8"	14.5"
27105	CMH10-80	10"	12.25"
27106	CMH12-80	12"	9.75"
27107	CMH15-80	15"	8"
27108	CMH18-80	18"	6.5"
27109	CMH21-80	21"	5.75"
27110	CMH24-80	24"	5"
27114	CMH29-80	29"	4"
27111	CMH36-80	36"	3.25"
27112	CMH72-80	72"	1.75"
27113	CMH01-80	1"	120"

PART #	REFERENCE	"X" DIM.	"Y" DIM.
27301	CMH03-60	3"	28"
27302	CMH04-60	4"	21"
27303	CMH06-60	6"	14.5"
27304	CMH08-60	8"	10.5"
27305	CMH10-60	10"	9"
27306	CMH12-60	12"	7.25"
27307	CMH15-60	15"	5.75"
27308	CMH18-60	18"	5"
27309	CMH21-60	21"	4"
27310	CMH26-60	26"	3.25"
27311	CMH52-60	52"	1.75"
27312	CMH01-60	1"	84"

# EHS

**Electric Heating Systems, Inc.**  
**2960 East State Street Ext.**  
**Hamilton, NJ 08619**  
**Phone 609.588.0900**



### *EHS Heater Wire & Beads*

80/20 23 Gauge 19 Strand	Part # 27502
80/20 23.5 Gauge 19 Strand	Part # 27501
80/20 37 Strand	Part # 27504
Kanthal "D" High-Temp	Part # 27503
Nickel "Cold Tail"	Part # 27505

Main Body Beads "Pink"	Part # 27001
Main Body w/Hole "Pink"	Part # 27002
Female End Bead "Pink"	Part # 27003
Male End Bead "Pink"	Part # 27004
Tail Beads "Pink"	Part # 27005
Oversize Tail Beads "Pink"	Part # 27006
Olive Beads "Pink"	Part # 27007

Main Body Beads "White"	Part # 27010
Main Body w/Hole "White"	Part # 27011
Female End Bead "White"	Part # 27012
Male End Bead "White"	Part # 27013
Tail Beads "White"	Part # 27014

Main Body Beads "Brown"	Part # 27020
Main Body w/Hole "Brown"	Part # 27021
Female End Bead "Brown"	Part # 27022
Male End Bead "Brown"	Part # 27023
Tail Beads "Brown"	Part # 27024

Track Beads "Pink"	Part # 27030
Track Bead w/Hole "Pink"	Part # 27031

# EHS

**Electric Heating Systems, Inc.**  
**2960 East State Street Ext.**  
**Hamilton, NJ 08619**  
**Phone 609.588.0900**



### **4-10 Million BTU Gas Train**

Complete Manual System Including:

2" NPT Train

15 HP Blower with Damper

8" Air Hose 25 Ft. Long

Two-2" Heavy Duty Gas Hoses 25 Ft. Long

4-10 Million BTU Burner

All Controls and Cabling

Fully Tested

Part # 28300M

Complete Fully Automatic System

Part # 28300FA

### **1-3 Million BTU Gas Train**

Complete Manual System Including:

1" NPT Train

3 HP Blower with Damper

4" Air Hose 25 Ft. Long

Two-1" Heavy Duty Gas Hoses 25 Ft. Long

1-3 Million BTU Burner

All Controls and Cabling

Fully Tested

Part # 28100M

Complete Fully Automatic System

Part # 28100FA



# EHS

Electric Heating Systems, Inc.  
2960 East State Street Ext.  
Hamilton, NJ 08619  
Phone 609.588.0900



### EHS Gas Burners

4-10 Million BTU Burner 316  
Stainless Steel Construction, 8"  
Air Hose adapter, 2" NPT Gas  
Fitting, 1/2" NPT UV Scanner  
Connection, Spark Plug Ignition,  
1/4" Air Adapter

Part # 28100B



1-3 Million BTU Burner 316  
Stainless Steel Construction, 4"  
Air Hose adapter, 1" NPT Gas  
Fitting, 1/2" NPT UV Scanner  
Connection, Spark Plug Ignition,  
1/4" Air Adapter

Part # 28300B



# EHS

**Electric Heating Systems, Inc.**  
**2960 East State Street Ext.**  
**Hamilton, NJ 08619**  
**Phone 609.588.0900**



## Gas Train Parts & Accessories

Inlet Brass Ball Valve	Part # 28310
Inlet Gas Strainer	Part # 28312
Valve with Auto Shut-off, Proof of Closure	Part # 28317
Valve Auto Reset, slow opening	Part # 28318
Gas Pressure Switch, High-Limit	Part # 28319
Pilot Solenoid Valve	Part # 28320
Pilot Gas Needle Valve	Part # 28321
Manual Butterfly Valve	Part # 28323
Manual Gas Valve	Part # 28324
Dungs Dual Valve with Proof of Closure	Part # 28325
Eclipse Rotary Actuator, Fully Automatic	Part # 28327

**When ordering the above, please specify Pipe Size.**

Low Gas Pressure Switch	Part # 28315
High Gas Pressure Switch	Part # 28326
Air Pressure Switch	Part # 28328
Pressure Gauge 0-100 In. Water Column	Part # 28316
Inlet Pressure Gauge 0-60PSI	Part # 28311

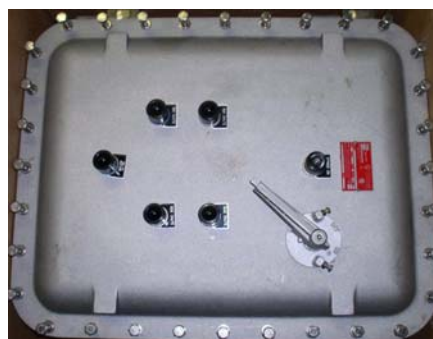
1" Gas Hose, 350 PSI, propane all natural	Part # 28400
1-1/2" Gas Hose, 350 PSI, propane all natural	Part # 28401
2" Gas Hose, 350 PSI, propane all natural	Part # 28402
6" Air Hose, Heavy duty Rubber w/spring	Part # 28420
8" Air Hose, Heavy duty Rubber w/spring	Part # 28421
Adjustable Blower Gate Valve	Part # 28422
1" Main Gas Regulator	Part # 28405
1-1/2" Main Gas Regulator	Part # 28406
2" Main Gas Regulator	Part # 28407
1" Main Gas Regulator Spring (1.5-3PSI)	Part # 28405
1-1/2" Main Gas Regulator Spring (1.5-3PSI)	Part # 28406
2" Main Gas Regulator Spring (1.5-3PSI)	Part # 28407

Veri-Flame Safeguard unit	Part # 28450
Veri-Flame Safeguard control unit base	Part # 28451
EHS- UV Scanner	Part # 28452
EHS- Flame Rod	Part # 28453



Electric Heating Systems, Inc.  
2960 East State Street Ext.  
Hamilton, NJ 08619  
Phone 609.588.0900

**Custom designed Control Panels for all types of applications,  
Engineered, Designed and Built at our location**



# EHS

Electric Heating Systems, Inc.  
2960 East State Street Ext.  
Hamilton, NJ 08619  
Phone 609.588.0900

***EHS Custom Furnaces Built-to-Order, Any Size, Any Shape***



**Pictured above: Two 11'x11'x45' Furnaces, side by side in Saudi Arabia. Built in sections, insulated, packed, and shipped via Sea Freight to reassembly on site.**



**Motorized, capable of moving back and forth over loads.**



**Triple Insulated**



**3 Million BTU Package Burners**

# EHS

Electric Heating Systems, Inc.  
2960 East State Street Ext.  
Hamilton, NJ 08619  
Phone 609.588.0900

***One of our Specialties, Building Turn Key Generator Trucks***



**Vent for the Generator Room and  
The Door to the Control Room**



**Optional door to the Generator Set**



**Control Room 24-Way Power Console, washable walls, Diamond Plate Flooring  
Base Board Heat (optional) Small Desk, A/C unit (optional)**



**Cable Room includes Cable Racks, Cables, Splitters and plenty of room for your  
supplies**



# EHS

Electric Heating Systems, Inc.  
2960 East State Street Ext.  
Hamilton, NJ 08619  
Phone 609.588.0900



Available in stock or special order 225KVA Generator sets available with or without enclosure specifically engineered to fit within the limitations of a Rig Truck.

*Installations are available*

# EHS

Electric Heating Systems, Inc.  
2960 East State Street Ext.  
Hamilton, NJ 08619  
Phone 609.588.0900

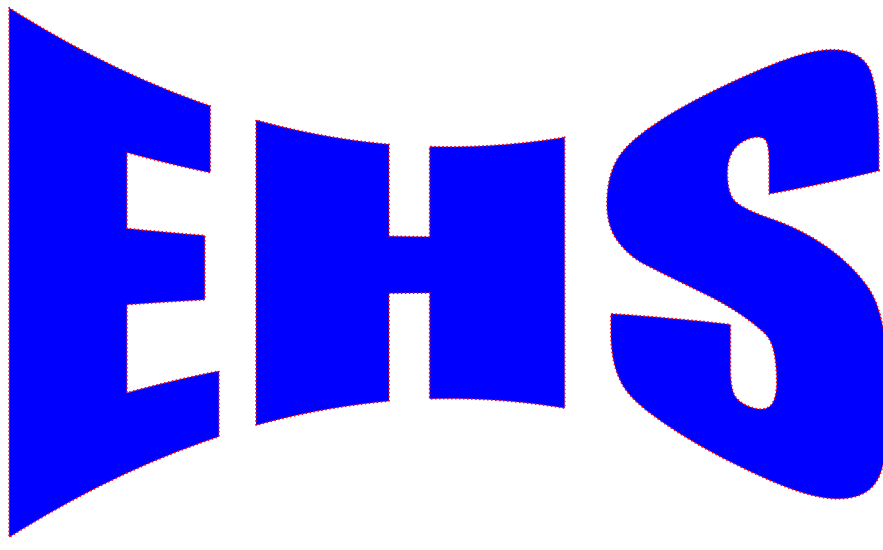


*Our Hamilton, NJ location*



*Our additional Location(20,000 Sq.ft.) in Bristol, PA for Furnace and Fabrication work*

**REMEMBER "THE BITTERNESS OF POOR QUALITY LASTS LONG  
AFTER THE SWEETNESS OF THE LOW BID"**



**Electric Heating Systems, Inc.**  
**2960 East State Street Ext.**  
**Hamilton, NJ 08619**  
**Phone # 609.588.0900**  
**Fax # 609.588.8333**  
**[www.HOTFOILEHS.com](http://www.HOTFOILEHS.com)**  
**[Sales@Hotfoilehs.com](mailto:Sales@Hotfoilehs.com)**

---